

Plover and Tern Predator Management and Monitoring Plan for 2024



Malinda Henry, PRRIP EDO

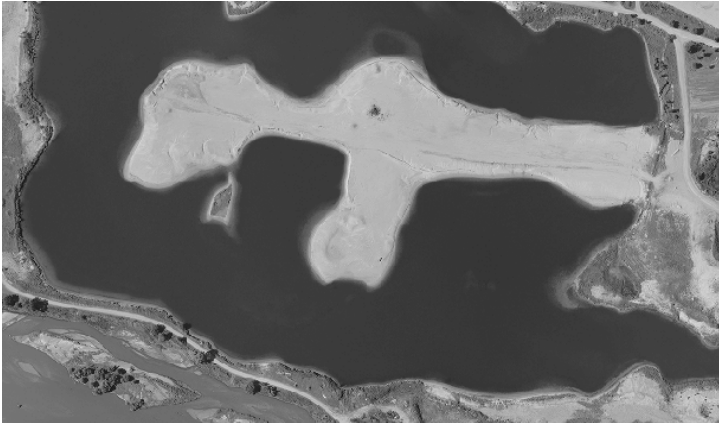
Technical Advisory Committee Meeting, October 10, 2023



PLATTE RIVER
RECOVERY IMPLEMENTATION PROGRAM

EBQ #8: Impact of predation on PP productivity?

EBQ #9 Effectiveness of management at mitigating losses?



2002 – 2020

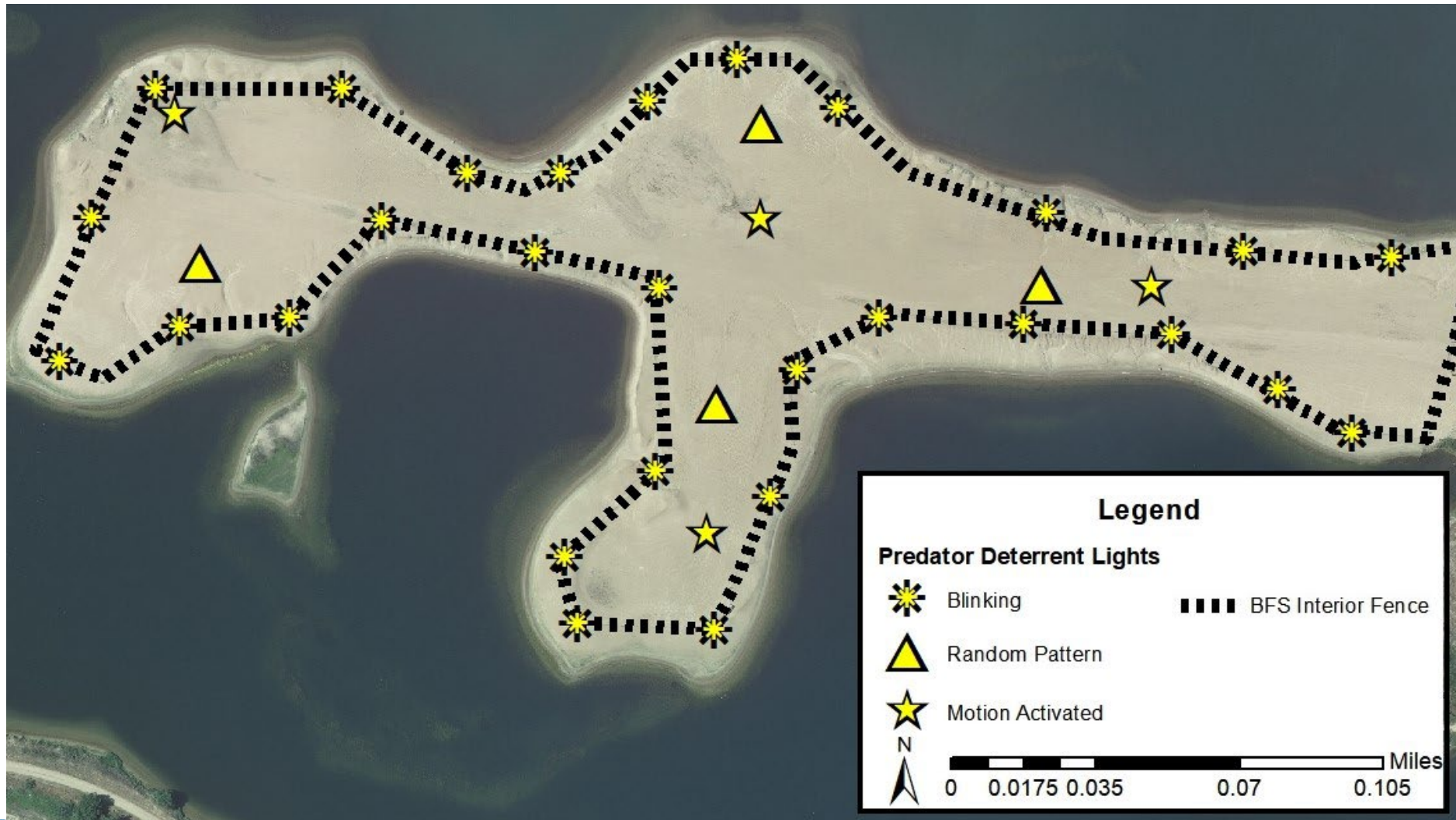
- 5.95 nests/year
- 2.67 FP nests-broods/year
- 0.25 fledges/bp/year
- Mammal and avian presence

EBQ #8: Impact of predation on PP productivity?
EBQ #9 Effectiveness of management at mitigating losses?



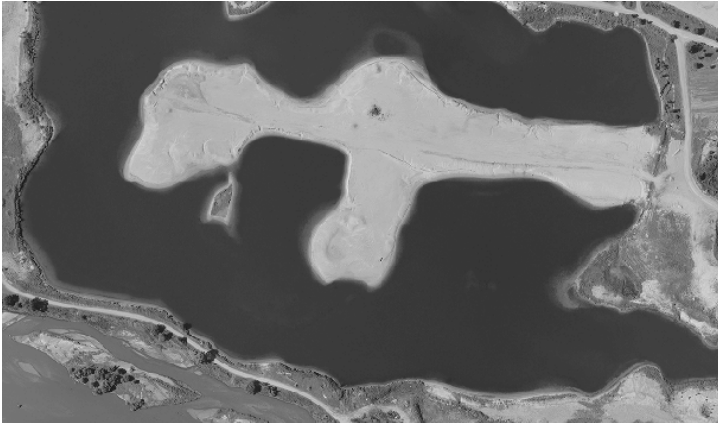
EBQ #8: Impact of predation on PP productivity?

EBQ #9 Effectiveness of management at mitigating losses?



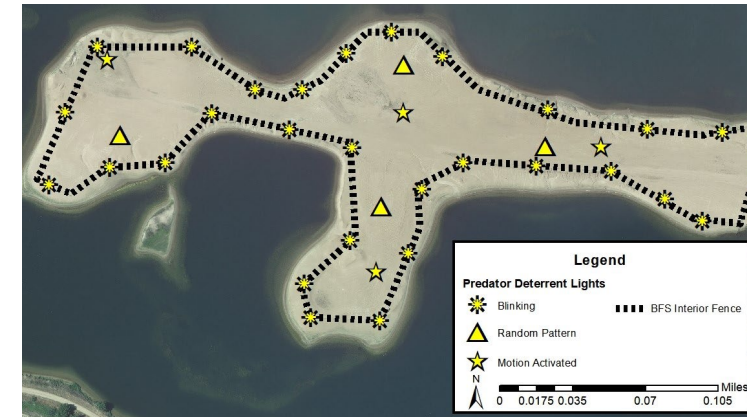
EBQ #8: Impact of predation on PP productivity?

EBQ #9 Effectiveness of management at mitigating losses?



2002 – 2020

- 5.95 nests/year
- 2.67 FP nests-broods/year
- 0.25 fledges/bp/year
- Mammal and avian presence



2021 - 2023

- 10.33 nests/year
- 1.7 FP nests-broods/year
- 1.01 fledges/bp/year
- Mammal and avian presence

Implementation Activities Timeline

2024

- Q1-Q2: Data Analysis Plan with TAC and ISAC
- Q2-Q3: Data Analysis
- Q3-Q4: TAC / ISAC check in, recommendation for 2025 implementation

